



Windsor State School

VOLUNTARY FINANCIAL CONTRIBUTION 2019

21st May 2019

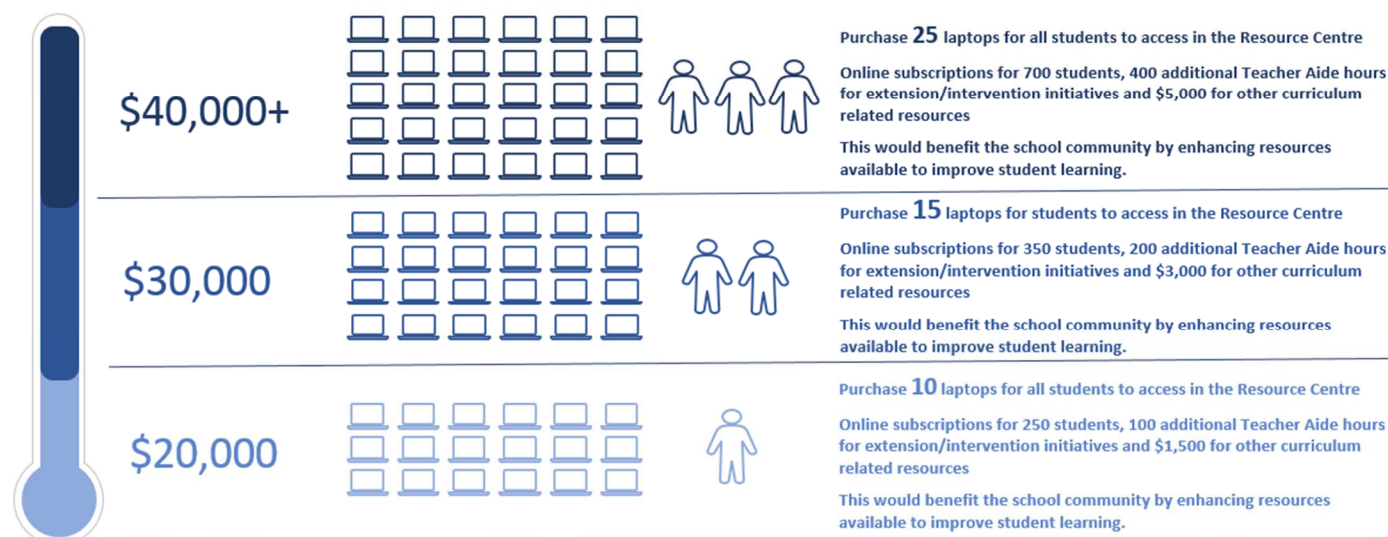
Dear Parents/Caregivers,

Providing a quality education for your children is a very resource intensive process. The Department of Education provides schools with a framework for the operation of voluntary student contribution schemes. These schemes have the sole role of enhancing resources available to improve student learning. It is essential that we maintain our high level of education provision. Each year, as part of our budget process, we identify funding priority areas for the Voluntary Parent Contribution Scheme. When choosing these priority areas, the School Council, P&C and school staff look to purchase resources that directly benefit students in classrooms. **We had fantastic support of this initiative in 2018 and received over \$30,000.**



*If each family at Windsor State School
were to contribute \$140 to the 2019
Voluntary Contribution Fund. . . .*

The school would be able to



Families with three or more students will receive a reduction, with a total contribution not exceeding \$280. Please note that this scheme is voluntary and parents are under no obligation to contribute (see attached information). In partnership with our School Council and P&C Association, I would however, encourage parents to contribute and help enhance the learning outcomes for your children. \$140 per child is only about 0.70c per child/school day (200 days/year).

Parents can elect to make full or part payments at any time by an EFT deposit/s into the school's bank account. Please include your child's surname and class as the reference (e.g. Smith3G).

School Bank Account: BSB 064-114 A/C 00090145

Payments can also now be made via EFTPOS (MasterCard/Visa) at the office. A receipt for all money contributed to this scheme will be provided.

Kind Regards,

Grant Baker
Principal

Harris Street, Windsor Q 4030
Ph 38664333 Fax 38664300
Email: admin@windsorss.eq.edu.au
Website: www.windsorss.qld.edu.au



the magic of learning